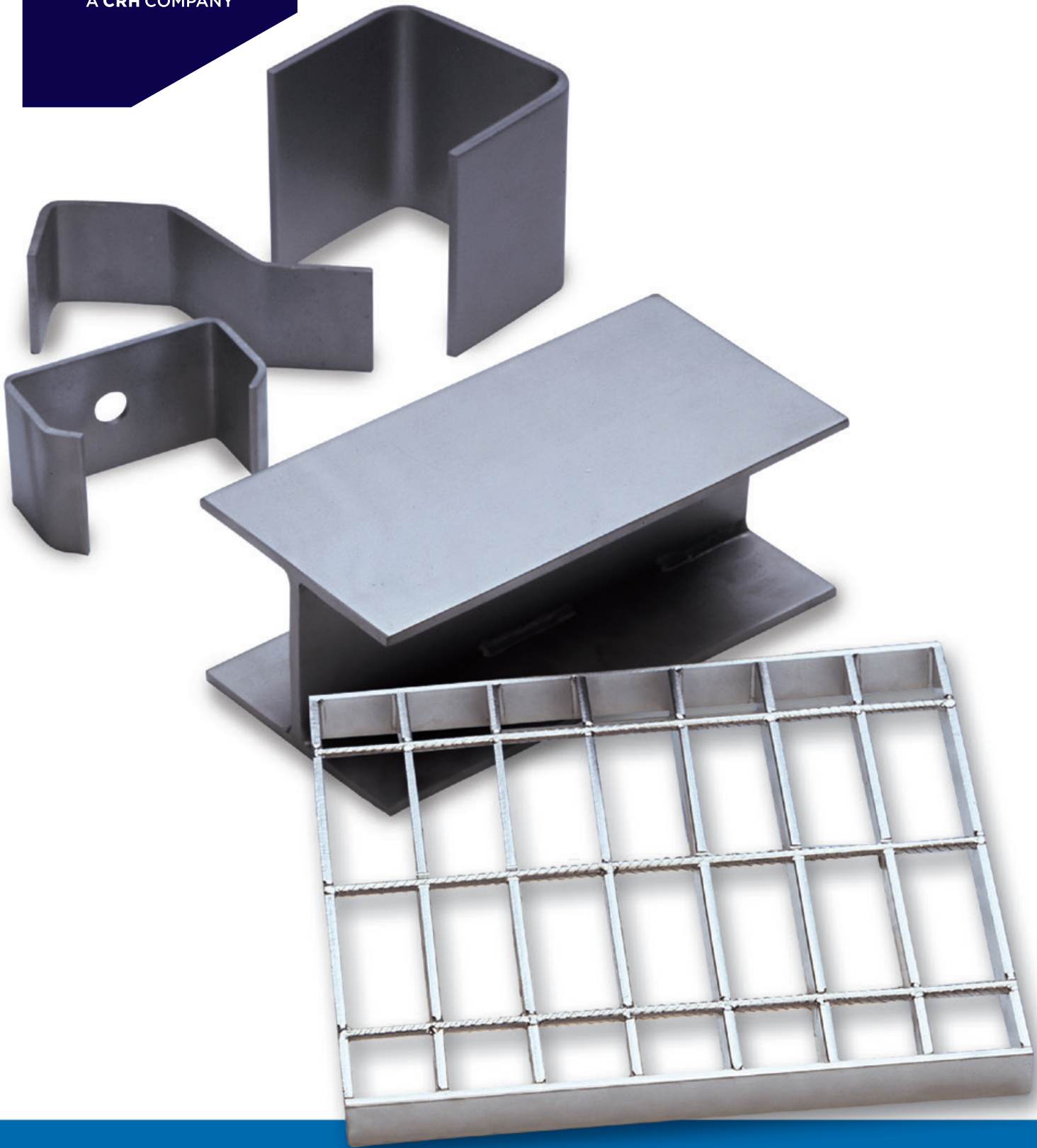


**Leviat**<sup>®</sup>  
A CRH COMPANY



**Ancon**<sup>®</sup>  
**Stainless Steel  
Sections & Flooring**  
for the Engineering Industry

November 2020



# **We are one team.** **We are Leviat.**

Leviat is the new name of CRH's construction accessories companies worldwide.

Under the Leviat brand, we are uniting the expertise, skills and resources of Ancon and its sister companies to create a world leader in fixing, connecting and anchoring technology.

The products you know and trust will remain an integral part of Leviat's comprehensive brand and product portfolio. As Leviat, we can offer you an extended range of specialist products and services, greater technical expertise, a larger and more agile supply chain and better, faster innovation.

By bringing together CRH's construction accessories family as one global organisation, we are better equipped to meet the needs of our customers, and the demands of construction projects, of any scale, anywhere in the world.

This is an exciting change. Join us on our journey.

Read more about Leviat at [Leviat.com](https://www.leviat.com)



Our product brands include:

**Ancon**<sup>®</sup>

**Connolly**

**HALFEN**

**HELIFIX**

**ISEDIO**

**PLAKA**



**60**

locations

sales in  
**30+**  
countries

**3000**

people worldwide

Imagine. Model. Make.

[Leviat.com](https://Leviat.com)

# Stainless Steel Sections & Flooring

## Company Overview

Leviat designs and manufactures high integrity steel components for a wide range of industries. Primarily, products are manufactured from stainless steel.



Section Forming

## Contents

<u>Austenitic Stainless Steel</u>	<u>2</u>
<u>Cold Formed Sections</u>	<u>2-3</u>
<u>Fabricated Sections</u>	<u>4</u>
<u>Staigrig Open Grid Flooring</u>	<u>5</u>

## Austenitic Stainless Steel

Austenitic Stainless Steels are high in chromium and therefore offer excellent resistance to corrosion. They are ductile and strong, and can be readily formed and welded.

Leviat holds considerable stocks of standard grade Austenitic stainless steel in order to meet urgent delivery deadlines.

Grade 1.4301 (304) is the most commonly used and is suitable for a broad range of applications. Grade 1.4401 (316) is recommended for highly corrosive environments such as marine locations.

Material can be supplied fully certificated if required.



## Cold Formed Sections

Leviat manufactures a diverse range of stainless steel cold formed sections using the latest high capacity computer controlled machinery.

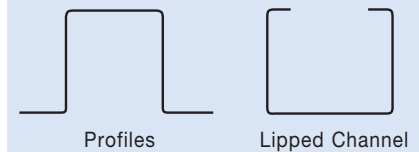


Computer controlled press brakes, which are among the most advanced in the industry, enable the company to produce a wide range of section shapes up to 5m in length and from 2mm to 20mm in thickness.

### Typical Section Properties

As an aid to the selection of appropriate cold formed sections the following page shows a small sample of section properties. A full list of properties is available on request.

Other typical section shapes include:



### Ancillary Operations

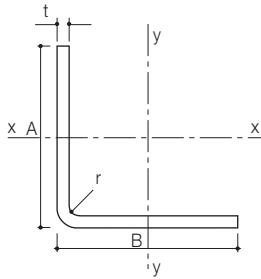
Sections can be offered with a range of ancillary operations including laser profiling, welded stiffeners, punched holes or slots and curves.

Products can be supplied with a specific surface finish to suit the requirements of the application. Services available include electro-polishing and bead blasting.



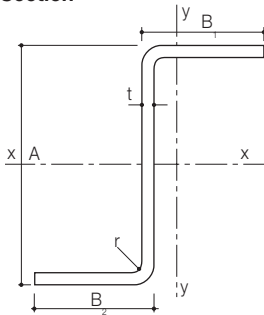
Punching

### Angle Section



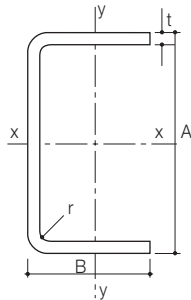
Angle Size A x B mm	Thickness t mm	Radius r mm	Moment of Inertia I (cm <sup>4</sup> )		Section Modulus Z (cm <sup>3</sup> )		Weight kg/m
			xx	yy	xx	yy	
25 x 25	3	3	0.79	0.79	0.46	0.46	1.07
50 x 50	3	3	1.42	1.42	0.67	0.67	1.31
130 x 120	5	8	208.03	171.27	22.21	19.29	9.50
100 x 120	6	16	117.69	183.12	15.90	21.89	9.76
150 x 140	6	16	380.64	322.12	35.33	31.31	13.08
140 x 120	8	15	389.54	267.49	39.75	30.28	15.41
190 x 200	8	15	1075.07	1217.56	76.97	84.22	23.63
110 x 100	10	21	223.70	177.20	29.59	25.00	14.92
140 x 130	10	21	484.83	404.66	49.36	43.30	19.66
140 x 200	10	21	559.31	1334.58	52.62	98.68	25.19
180 x 180	10	21	1092.62	1092.62	84.25	84.25	26.77
120 x 110	12	20	346.68	279.90	42.07	36.03	19.61
170 x 140	12	20	1005.93	625.14	85.98	60.94	27.19
130 x 100	15	20	502.51	262.08	58.84	36.77	24.08
150 x 130	15	20	835.59	586.74	81.71	63.27	30.00

### Zed Section



Zed Size A x B <sub>1</sub> x B <sub>2</sub> mm	Thickness t mm	Radius r mm	Moment of Inertia I (cm <sup>4</sup> )		Section Modulus Z (cm <sup>3</sup> )		Weight kg/m
			xx	yy	xx	yy	
50 x 25 x 25	3	3	9.73	10.90	3.89	3.47	2.14
140 x 70 x 35	4	4	251.28	123.46	31.31	17.50	7.33
70 x 35 x 35	5	4	42.83	48.04	12.24	11.08	4.91
110 x 50 x 50	6	8	153.15	163.11	30.63	26.17	8.46
160 x 80 x 40	8	8	674.19	289.95	73.30	37.84	16.03
200 x 100 x 100	10	15	2125.48	2302.29	212.55	181.97	28.66
150 x 75 x 75	12	15	943.93	948.66	125.86	105.16	24.46
190 x 95 x 95	15	10	2078.96	2216.59	218.84	187.89	32.04

### Equal Channel Section

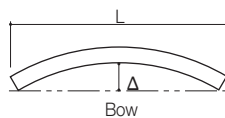


Channel Size A x B mm	Thickness t mm	Radius r mm	Moment of Inertia I (cm <sup>4</sup> )		Section Modulus Z (cm <sup>3</sup> )			Weight kg/m
			xx	yy	xx	yy max	yy min	
50 x 25	3	3	9.70	1.56	3.88	2.04	0.90	2.14
100 x 50	4	4	113.00	18.06	22.60	12.58	5.07	5.90
160 x 80	5	4	603.40	95.76	75.42	43.04	16.58	12.02
110 x 55	6	8	208.39	33.67	37.89	20.16	8.79	9.41
80 x 40	8	8	87.34	14.17	21.83	10.23	5.42	8.45
200 x 100	10	15	2118.70	342.27	211.87	113.98	48.92	28.66
150 x 75	12	15	935.18	151.80	124.69	61.47	30.18	24.46
190 x 95	15	20	2372.83	385.13	249.77	123.11	60.44	38.68

**Note:** Properties listed vary from those for rolled sections due to cold forming and the effect of the formed radius.

### Tolerances

Unless otherwise agreed the tolerances applicable to cold formed sections are as below:



Element		Tolerance
Overall length (up to and including 4000mm)	L	±5mm
Leg Length - Angle	A/B	±3mm
Leg Length - Channel/Zed	A	±5mm
	B	±3mm
Thickness	t	±7.5%
Included Angle	α	±2°
Hole or Slot Centres	c	±5mm
Bow, on both axis	Δ	±3mm per metre length

**Notes:** 1 The manufacturing tolerances set out in the table will meet most applications. Should closer tolerances be required, please provide a drawing indicating your requirements. 2 The tolerances are not applicable to curved members.



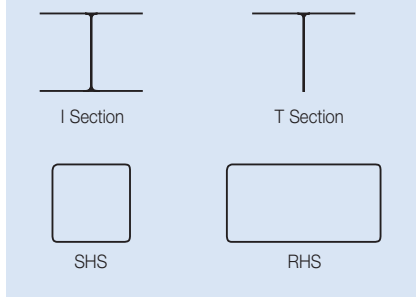
# Stainless Steel Sections & Flooring

## Fabricated Sections

In addition to cold formed sections, we produce stainless steel fabricated sections.

Our fabrication personnel are routinely coded to BS4872 and in addition are regularly approved to BS EN 287 to weld to the procedures specific to BS EN 288.

Sections available include:

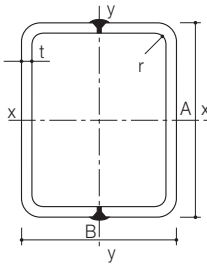


## Typical Fabricated Section Properties

As an aid to the selection of appropriate fabricated sections the following is a small sample of section properties. A full list of properties is available on request.

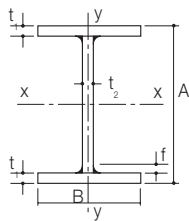


## Fabricated Hollow Section



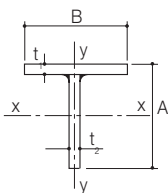
Box Section Size A x B	Thickness t	Radius r	Moment of Inertia I (cm <sup>4</sup> )		Section Modulus Z (cm <sup>3</sup> )		Weight kg/m
			xx	yy	xx	yy	
70 x 50	4	4	54.44	32.01	15.56	12.80	6.75
130 x 130	5	4	628.43	628.43	96.68	96.68	19.31
150 x 100	6	8	821.26	437.42	109.50	87.48	21.67
110 x 80	8	8	394.26	236.88	71.68	59.22	20.69
170 x 150	10	15	2232.86	1837.29	262.69	244.97	44.69
150 x 130	12	15	1641.79	1307.74	218.91	201.19	45.12
200 x 200	15	20	5650.88	5650.88	565.09	565.09	82.09

## Fabricated I Section



I Section Size B x A	Size of Fillet f	Thickness		Moment of Inertia I <sub>xx</sub> (cm <sup>4</sup> )	Section Modulus Z <sub>xx</sub> (cm <sup>3</sup> )	Radius of Gyration about yy axis		Weight kg/m
		t <sub>1</sub>	t <sub>2</sub>			R <sub>y</sub> (cm)	A/t <sub>1</sub>	
130 x 200	6	8	6	2229.5	223.0	3.03	25.0	25.72
150 x 300	6	10	6	7407.6	493.8	3.47	30.0	37.54
200 x 300	6	10	6	9510.9	634.1	4.85	30.0	45.44
250 x 450	10	16	10	43774.0	1946.0	5.85	28.1	97.80

## Fabricated T Section



T Section Size B x A	Size of Fillet f	Thickness		Moment of Inertia I <sub>xx</sub> (cm <sup>4</sup> )	Section Modulus Z <sub>xx</sub> (cm <sup>3</sup> )		Radius of Gyration about yy axis R <sub>y</sub> (cm)	Weight kg/m
		t <sub>1</sub>	t <sub>2</sub>		Max.	Min.		
75 x 100	8	8	8	134.87	42.75	19.70	1.46	11.06
100 x 120	10	10	8	258.08	78.00	29.69	2.11	15.64
150 x 150	10	10	10	637.24	154.65	58.57	3.12	23.70
200 x 250	12	12	10	2992.47	438.68	164.69	4.10	38.90

## Staigrig Open Grid Flooring

Staigrig stainless steel grid is a lightweight, corrosion resistant open grid flooring, ideal for use where hygiene, low maintenance and assured long life are required.

The combination of durability and high strength means Staigrig is a very cost-effective alternative to galvanised steel and aluminium grid floors. It is available in mill finish, pickled and passivated or electropolished finish.

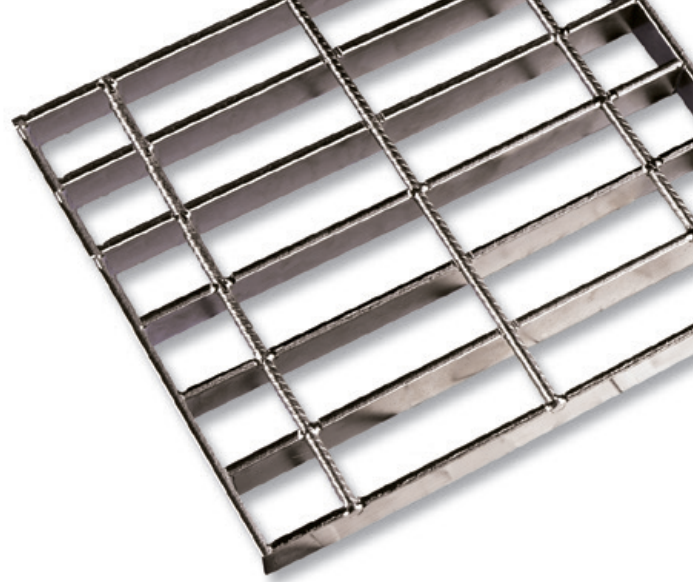
Stainless Steel Staigrig open grid flooring is available in either grade 304 or 316 and manufactured in standard sized panels of 1000mm max span x 989mm max width for ease of site handling. Panels can be produced to customers' specific requirements within these dimensions using our universal tooling.

Each panel consists of 25mm x 5mm bearer bars at 41mm centres and 6mm rebar restraints at 100mm centres.

Staigrig panels are supplied fully bound and full mill certification is available if required.

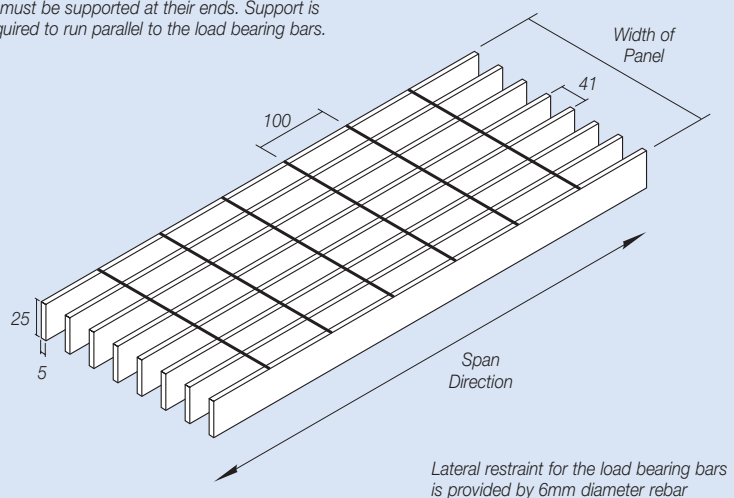
When ordering please specify:

1. Grade of stainless steel required
2. Span, width and quantity of panels



### Load Bearing Bar 25 x 5mm

Load bearing bars run in the direction of the span. These must be supported at their ends. Support is not required to run parallel to the load bearing bars.



Clear Span (mm)	25 x 5 bars at 41 c/c Uniformly Distributed Load		25 x 5 bars at 41 c/c Load Concentrated on 150mm Square		25 x 5 bars at 41 c/c Load Concentrated on 300mm Square	
	Permissible Load (kN/m <sup>2</sup> )	Deflection (mm/kN/m <sup>2</sup> )	Permissible Load (kN)	Deflection (mm/kN)	Permissible Load (kN)	Deflection (mm/kN)
300	163.731	0.003	4.028	0.128	14.097	0.039
350	120.292	0.006	3.295	0.210	10.573	0.070
400	92.099	0.010	2.788	0.320	8.458	0.110
450	72.769	0.017	2.417	0.461	7.049	0.170
500	58.943	0.026	2.132	0.639	6.042	0.242
550	48.713	0.038	1.908	0.857	5.286	0.331
600	40.933	0.053	1.726	1.118	4.699	0.440
650	34.878	0.073	1.576	1.428	4.229	0.569
700	30.073	0.098	1.450	1.790	3.845	0.720
750	26.197	0.130	1.343	2.207	3.524	0.895
800	23.025	0.168	1.250	2.685	3.253	1.096
850	20.396	0.214	1.169	3.227	3.021	1.324
900	18.192	0.269	1.098	3.836	2.819	1.581
950	16.328	0.334	1.036	4.518	2.643	1.870
1000	14.736	0.410	0.980	5.276	2.488	2.191

**Note:** All loads listed are limited to: Bending Stress  $\leq 145\text{N/mm}^2$ , Shear Stress  $\leq 96.67\text{N/mm}^2$ , Deflection  $\leq \text{Span}/100$

## Worldwide contacts for Leviat:

### Australia

**Leviat**  
98 Kurrajong Avenue,  
Mount Druitt Sydney, NSW 2770  
Tel: +61 - 2 8808 3100  
Email: info.au@leviat.com

### Austria

**Leviat**  
Leonard-Bernstein-Str. 10  
Saturn Tower, 1220 Wien  
Tel: +43 - 1 - 259 6770  
Email: info.at@leviat.com

### Belgium

**Leviat**  
Industrielaan 2  
1740 Ternat  
Tel: +32 - 2 - 582 29 45  
Email: info.be@leviat.com

### China

**Leviat**  
Room 601 Tower D, Vantone Centre  
No. A6 Chao Yang Men Wai Street  
Chaoyang District  
Beijing · P.R. China 100020  
Tel: +86 - 10 5907 3200  
Email: info.cn@leviat.com

### Czech Republic

**Leviat**  
Business Center Šafránková  
Šafránková 1238/1  
155 00 Praha 5  
Tel: +420 - 311 - 690 060  
Email: info.cz@leviat.com

### Finland

**Leviat**  
Vädursgatan 5  
412 50 Göteborg / Sweden  
Tel: +358 (0)10 6338781  
Email: info.fi@leviat.com

### France

**Leviat**  
6, Rue de Cabanis  
FR 31240 L'Union  
Toulouse  
Tel: +33 - 5 - 34 25 54 82  
Email: info.fr@leviat.com

### Germany

**Leviat**  
Liebigstrasse 14  
40764 Langenfeld  
Tel: +49 - 2173 - 970 - 0  
Email: info.de@leviat.com

### India

**Leviat**  
309, 3rd Floor, Orion Business Park  
Ghodbunder Road, Kapurbawdi,  
Thane West, Thane,  
Maharashtra 400607  
Tel: +91 - 22 2589 2032  
Email: info.in@leviat.com

### Italy

**Leviat**  
Via F.lli Bronzetti 28  
24124 Bergamo  
Tel: +39 - 035 - 0760711  
Email: info.it@leviat.com

### Malaysia

**Leviat**  
28 Jalan Anggerik Mokara 31/59  
Kota Kemuning, 40460 Shah Alam  
Selangor  
Tel: +603 - 5122 4182  
Email: info.my@leviat.com

### Netherlands

**Leviat**  
Oostermaat 3  
7623 CS Borne  
Tel: +31 - 74 - 267 14 49  
Email: info.nl@leviat.com

### New Zealand

**Leviat**  
2/19 Nuttall Drive, Hillsborough,  
Christchurch 8022  
Tel: +64 - 3 376 5205  
Email: info.nz@leviat.com

### Norway

**Leviat**  
Vestre Svanholmen 5  
4313 Sandnes  
Tel: +47 - 51 82 34 00  
Email: info.no@leviat.com

### Philippines

**Leviat**  
2933 Regus, Joy Nostalg,  
ADB Avenue  
Ortigas Center  
Pasig City  
Tel: +63 - 2 7957 6381  
Email: info.ph@leviat.com

### Poland

**Leviat**  
Ul. Obornicka 287  
60-691 Poznan  
Tel: +48 - 61 - 622 14 14  
Email: info.pl@leviat.com

### Singapore

**Leviat**  
14 Benoi Crescent  
Singapore 629977  
Tel: +65 - 6266 6802  
Email: info.sg@leviat.com

### Spain

**Leviat**  
Poligono Industrial Santa Ana  
c/ Ignacio Zuloaga, 20  
28522 Rivas-Vaciamadrid  
Tel: +34 - 91 632 18 40  
Email: info.es@leviat.com

### Sweden

**Leviat**  
Vädursgatan 5  
412 50 Göteborg  
Tel: +46 - 31 - 98 58 00  
Email: info.se@leviat.com

### Switzerland

**Leviat**  
Grenzstrasse 24  
3250 Lyss  
Tel: +41 - 31 750 3030  
Email: info.ch@leviat.com

### United Kingdom

**Leviat**  
President Way, President Park,  
Sheffield, S4 7UR  
Tel: +44 - 114 275 5224  
Email: info.uk@leviat.com

### United States of America

**Leviat**  
6467 S Falkenburg Rd.  
Riverview, FL 33578  
Tel: (800) 423-9140  
Email: info.us@leviat.us

### For countries not listed

Email: info@leviat.com

**Leviat.com**

#### Notes regarding this catalogue

© Protected by copyright. The construction applications and details provided in this publication are indicative only. In every case, project working details should be entrusted to appropriately qualified and experienced persons. Whilst every care has been exercised in the preparation of this publication to ensure that any advice, recommendations or information is accurate, no liability or responsibility of any kind is accepted by Leviat for inaccuracies or printing errors. Technical and design changes are reserved. With a policy of continuous product development, Leviat reserves the right to modify product design and specification at any time.



**For more information on the following products, please contact:**

**Masonry, Structural and  
Precast Concrete products:**

1300 304 320  
info.ancon.au@leviat.com  
Ancon.com.au

**Concrete Floor Jointing  
products:**

1800 335 215  
info.connolly.au@leviat.com  
Connolly.com.au  
info.isedio.au@leviat.com  
Isedio.com.au

**Remedial Masonry  
products:**

1300 667 071  
info.helifix.au@leviat.com  
Helifix.com.au

**General Enquiries**

1300 304 320  
Leviat.com

**Sales Offices and Production**

**New South Wales, Sydney**

98 Kurrajong Avenue  
Mount Druitt | Sydney  
NSW 2770

**New South Wales, Casino**

10 Irving Drive  
Casino  
NSW 2470

**Victoria**

9/63-69 Pipe Road  
Laverton North | Melbourne  
VIC 3026

**Queensland**

4/15 Terrace Place  
Murarrie | Brisbane  
QLD 4172

**Western Australia**

18 Tennant Street  
Welshpool | Perth  
WA 6106

**Leviat.com**

---

**Leviat**<sup>®</sup>  
A CRH COMPANY

**Imagine. Model. Make.**

**Leviat.com**